

SERVICE BULLETIN

Hydraulic Motor Changes

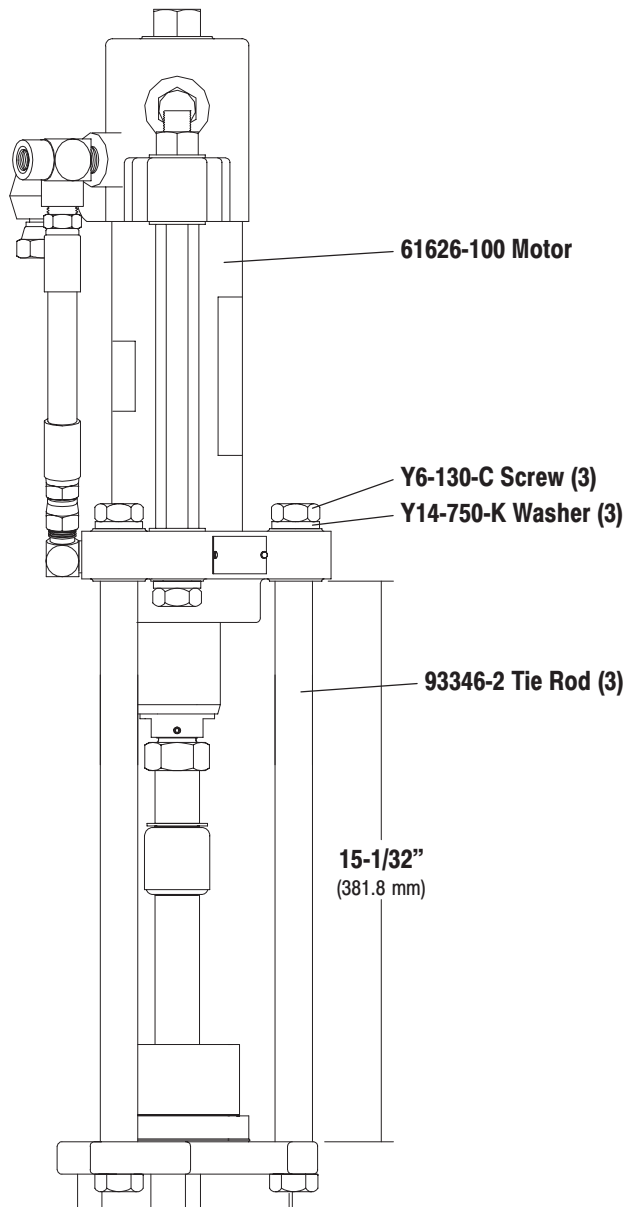
MODELS AFFECTED: 650939-X-B, 650940-X-B, 650941-X-C

RELEASED: 12-18-02
REVISED: 6-18-03
(REV. 03)
BULLETIN: #1-02

The following changes were made to 4.125 square" hydraulic motor.

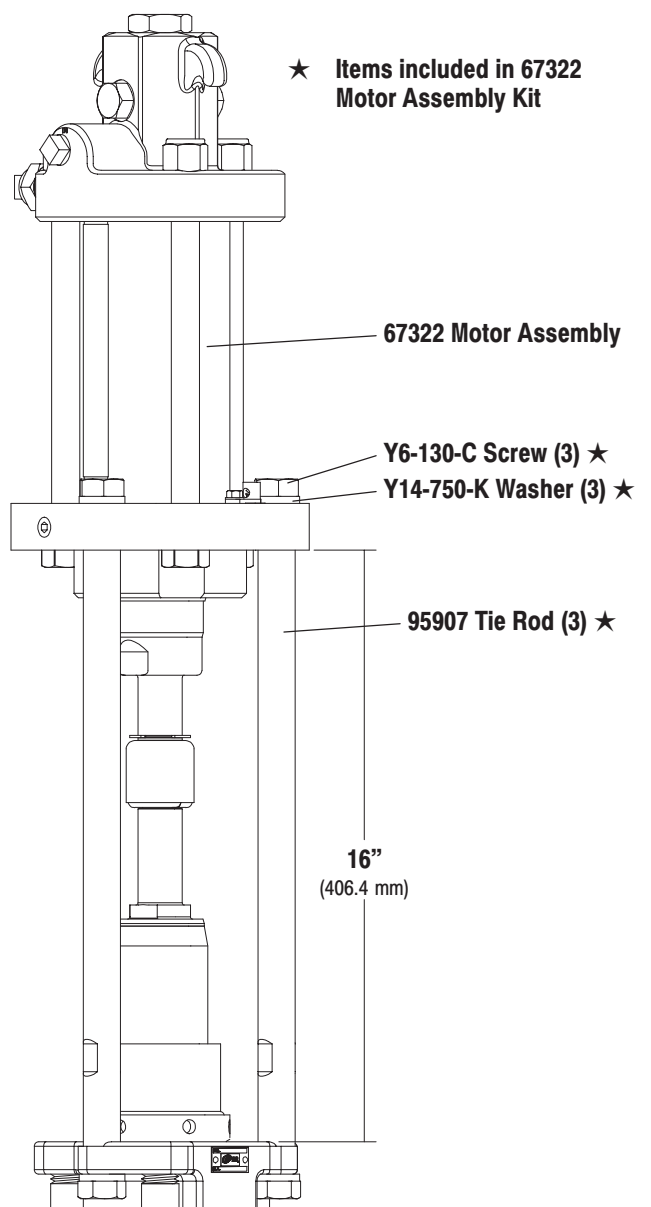
- 1.) 61626-100 motor cancelled and replaced with 67322 motor assembly.
- 2.) Change effects models built after December 1, 2002 (S/N L0012-XXX).

OLD DESIGN



Requires 61938-1 wall mount bracket.

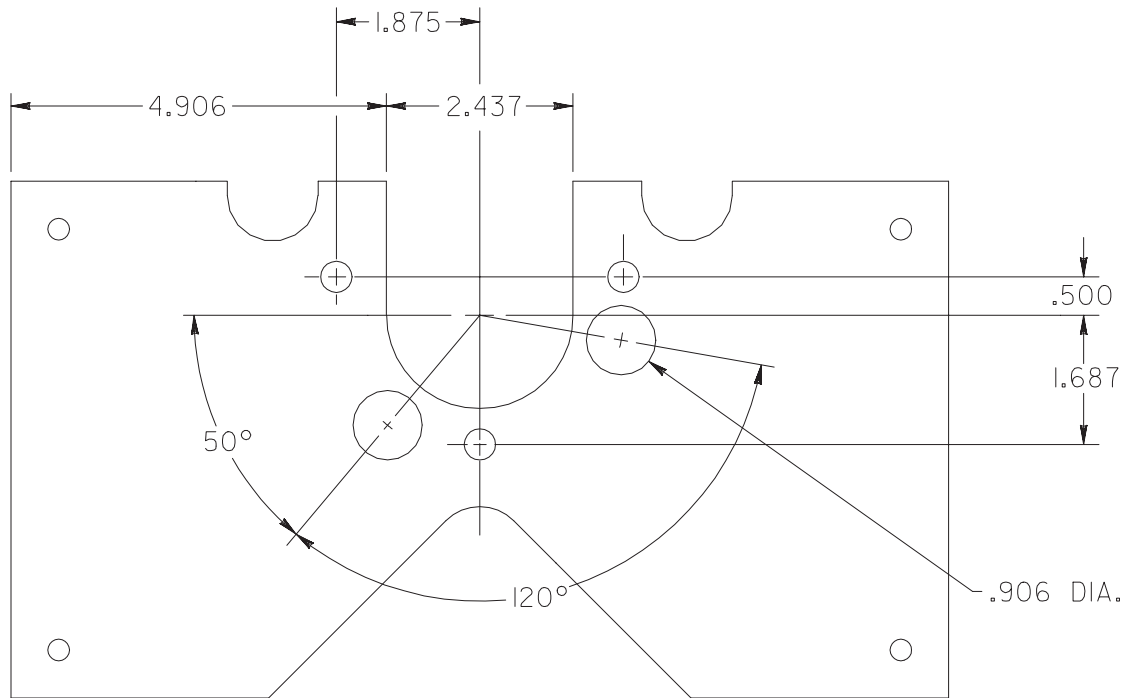
NEW DESIGN



Requires 62151 wall mount bracket.

For threaded pump connections, use 67325 Motor Assembly Kit.

OLD MOUNTING PLATE DESIGN (61938-1)



NEW MOUNTING PLATE DESIGN (62151)

